

CERTIFICATE OF LOCATION OF GOVERNMENT CORNER

EAST QUARTER _____ Corner of Section 36 , Township 107N , Range 40W

5th Principal Meridian, State of Minnesota, County of MURRAY

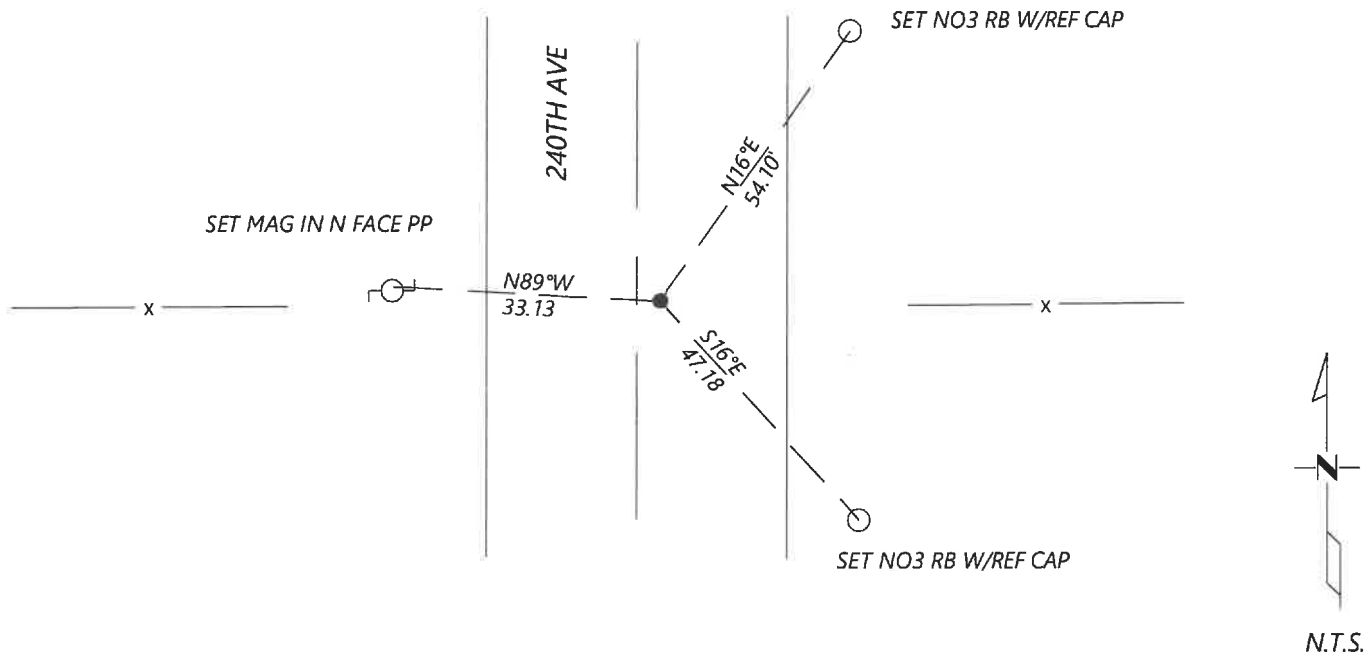
At the corner location shown on the sketch:

On 8/26/2020 found a IRON WITH CAP MOSENG RLS 11943 DOWN 0.3FT
DATE

left monument as found lowered monument removed monument (explain)

On _____ placed a _____
DATE

SKETCH OF REFERENCE TIES



Statement of evidence for this corner location is on back of this page.

I hereby certify that this document was researched and prepared by me or under my direct supervision and that I am a licensed Land Surveyor under the laws of the State of Minnesota.

Signature [Handwritten Signature]

Date 6/16/2021 License No. 45874

Title:

- Land Surveyor Professional Engineer
- County Surveyor County Engineer

OFFICE OF THE COUNTY RECORDER

County of Murray

I hereby certify that this document was filed in the Co.

Recorder's office at _____ M. on the _____ day of _____ A.D. 20 _____

County Recorder [Handwritten Signature]

by JUN 22 2021, Deputy

DOCUMENT NO. _____

Statement of Evidence:

East Quarter Corner of Section 36, Township 107 North, Range 40 West, 5th Principal Meridian, Murray County, Minnesota.

JUNE 29, 1932 - SECTION 36 SURVEY RECORD SHOWS FOUND OLD CORNER. PLACED CONCRETE MARKER. FENCE POST 25 FT EAST ON LINE. A DISTANCE OF 2642.2 FT IS SHOWN TO THE NE AND SE CORNER OF SECTION 36.

DECEMBER 28, 1989 - HWY DEPT. RECORDS SHOW A CONCRETE MONUMENT 24" BELOW GRADE. PLACED 1-1/4" IRON PIPE WITH SURVEYOR'S SEAL ON TOP. CENTER OF I-BEAM CORNER FENCE POST EAST 31.60; N& SEAL IN PP WEST 33.30.

SEPTEMBER 2020 - WESTWOOD PROFESSIONAL SERVICES SEARCHED AND FOUND IRON WITH CAP LS 11943 APPROXIMATELY 2.5 FT EAST OF ROAD CENTERLINE AND IN LINE WITH E/W FENCE LINES. MEASURED DISTANCE OF 2641.4 TO THE SE SECTION CORNER AND 2641.7 TO THE NE SECTION CORNER, WHICH FITS CLOSE TO THE 1932 DATA. ACCEPTED FOUND MONUMENT AND SET NEW REFERENCES.

Analysis of the recovered data, field evidence and survey measurements, indicates that the monument found is the correct perpetuation of this corner. For additional information concerning this corner please contact Westwood Professional Services.